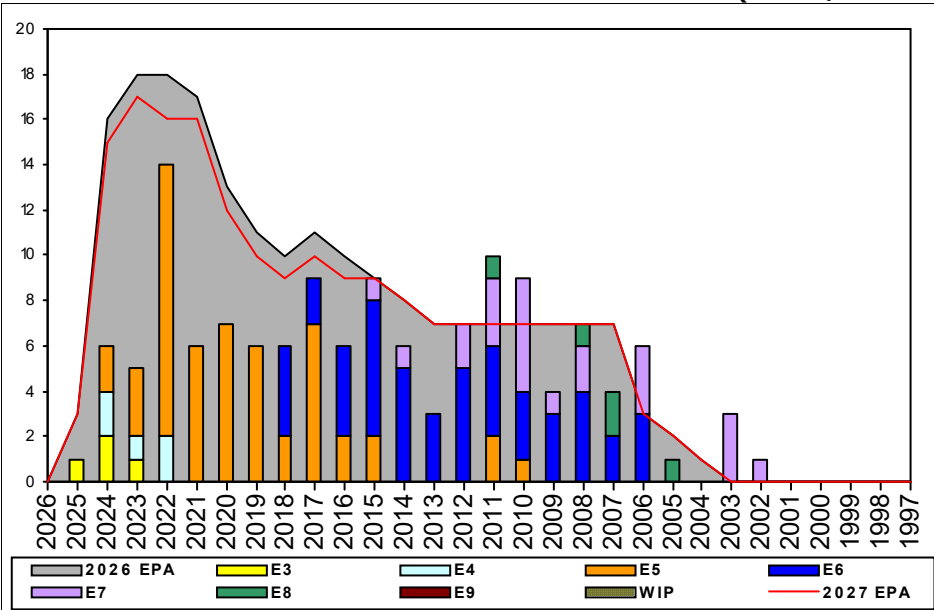


CTI (Latin/South America) - B515



Sea Shore Flow		
TOUR	SEA	SHORE
1ST		
2ND		
3RD		
4TH		
5TH		
6TH		
7TH		

FORCE STRUCTURE MANNING TO BA										
PG	SEA	INV	BA	SHORE	INV	BA	SEA + SHORE	TOTAL INV	TOTAL BA	
E1-3	0.0%		4	#Div/0!	4		100.0%	4	4	
E4	0.0%		9	8.6%	5	58	7.5%	5	67	
E5	125.0%	10	8	80.4%	37	46	87.0%	47	54	
E6	166.7%	10	6	109.4%	35	32	118.4%	45	38	
E7	75.0%	3	4	158.3%	19	12	137.5%	22	16	
E8				125.0%	5	4	125.0%	5	4	
E9										
Total	74.2%	23	31	69.1%	105	152	69.9%	128	183	

TIS to PG Years	Pay Grade	E1-E3	E4	E5	E6	E7	E8	E9
ALL Navy	TIS		2.2	4.0	8.7	13.8	17.8	21.8
	CTI		2.3	4.5	8.2	13.4	15.4	
TIG to PG Years	ALL Navy		1.3	1.8	4.6	5.7	5.0	4.7
	CTI		1.8	2.7	4.3	6.6	3.8	

Zone Info	ZONE A	ZONE B	ZONE C	ZONE D	ZONE E	ALL ZONES
FY26 Manning:	51.0%	53.0%	74.0%	105.0%	100.0%	68.0%
FYTD RENL Rate:	100.0%	80.0%	100.0%	66.7%		64.3%

NOTES

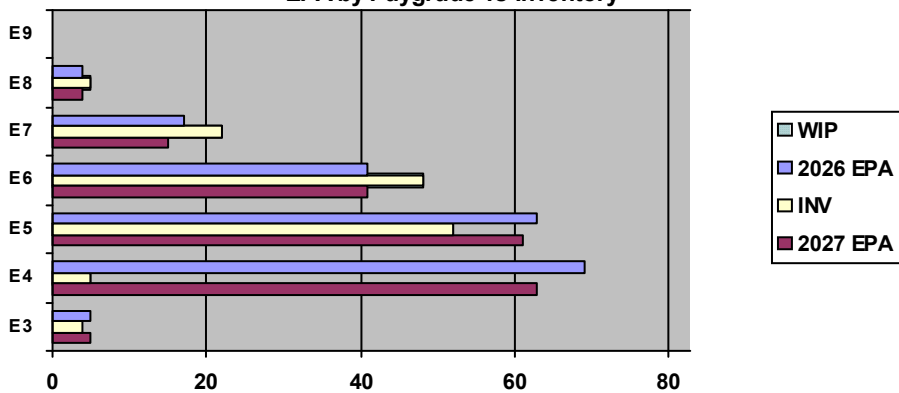
SPANISH ***ZONE A/B/C SRB available!*** Please take advantage.

Billets are being coded for INT/ADV NECs, recommend updating your MNA searches and reaching out to the detailers for further information.

Rating conversions will be considered on a case-by-case basis.

The TECHAD is available at 901-874-2653 for questions.

EPA by Paygrade vs Inventory



	E1-3	E4	E5	E6	E7	E8	E9	TOTAL
% INV to FY26 EPA	80%	7%	83%	117%	129%	125%		68%
EPA (FY26)	5	69	63	41	17	4		199
INVENTORY	4	5	52	48	22	5		136
EPA (FY27)	5	63	61	41	15	4		189
% INV to FY27 EPA	80%	8%	85%	117%	147%	125%		72%
INV +WIP / FY26 EPA								
INVENTORY			← E-3 and Below WIP					
INV +WIP / FY26 EPA								